

DEFENDER^{cab}™



Owner's Manual

Model:
Arctic Cat Wildcat

Caution:

Before using this product, read this manual and follow all safety instructions.



Arctic Cat Wildcat Cab kit*

- Safety Instructions
- Kit Contents
- Tool Requirement
- Assembly Instructions
- Additional Notes

* DefenderCab™ and accessories are in no way affiliated with Arctic Cat. Any use of these or the Wildcat name(s) is only to identify their utility vehicle as it pertains to our accessories. Arctic Cat and Wildcat are registered trademarks of Arctic Cat Inc.

Warning: Failure to heed all safety and operating instructions and / or warnings regarding use of this product can result in serious bodily injury.

SAFETY INSTRUCTIONS

Read entire assembly instructions prior to commencing work.

Install all parts indicated in assembly instructions. Failure to fully assemble product before use could result in personal injury.

Assembly of product requires use of hand and/or power tools. If you are not experienced in using these types of tools, have product dealer do the installation for you.

Some parts contain sharp edges; wear protective gloves if necessary.

Dress for safety. Do not wear loose clothing, neckties or jewelry if using power tools to assemble this product.

Always keep your assembly area clean, uncluttered and well lit.

Keep visitors and children a safe distance away from the assembly area. Visitors should wear the same safety equipment described above.

NEVER OPERATE YOUR UTV WITH THE CAB DOORS OPEN. FAILURE TO PROPERLY LATCH THE DOORS PRIOR TO MOVING THE VEHICLE COULD RESULT IN SERIOUS INJURY.

Additional Safety Note(s):

Some optional installation steps require that some fasteners pertaining to safety devices be temporarily removed. By choosing to perform these steps, you are doing so at your own risk and accept full responsibility should these safety devices fail due to your tampering with them. Please consider the full extent of possible repercussions when choosing to remove any safety device such as nets or safety belts.

Cab Enclosure Kit Contents

Your DefenderCab™ kit should contain the parts listed below. Separate all parts from packing materials. Do not discard packing material until assembly is complete. Item quantities are listed in parenthesis below. Note: Items listed below may or may not be included based on selected options.

Panels, Doors and Brackets

- (1ea) 33001 & 33002 Driver & Passenger Side Panel Assy
- (1) 33003 Windshield Panel
- (1) 33004 Back Panel
- (1) 33005 Roof Panel
- (1ea) 33007 & 33009 Driver & Pass. Door Assy
- (1ea) 33015 & 33016 Driver & Pass. Roll Bar Flares
- (1ea) 33028 & 33029 Driver & Pass. Damper brackets (installed)
- (1ea) 33033 & 33034 Driver & Pass. Side Brackets
- (1ea) 33057 & 33058 Driver & Pass. Front panel clamp bracket

Hardware

- (2) Gas Charged Door Damper (installed)
- (2) Striker Bolts (installed)
- (4) Velcro back to back 1" Wide (installed)
- (2) 1 3/4" rubberized clamp
- (1) 33042 Hardware Bag*

*NOTE: Hardware bag contains spare items. Some items may or may not be used for this application.

Tools Required for Assembly

Ensure that following tools are available before you begin the assembly of your Defender Cab™ Enclosure Kit. *** **Assembly may require assistance** ***

NOTE: Stainless Steel hardware **WILL** gall (seize) without use of anti-seize compound

- Phillips & Flat screwdrivers
- 1/8" and 5/32 Allen Key
- Torx set
- Metric wrench and socket sets
- Electric drill
- 1/8" drill bit (for pilot holes)
- 1/4" drill bit
- Utility knife
- Utility clamps (Suggested)
- Rubber Mallet (Suggested)
- Anti-Seize Compound or Lubricant

Kit Installation

1. Vehicle Preparation

i) Remove 2 top screws holding safety net as shown in (Fig.1).

ii) Remove bottom screw holding net as shown in (Fig.2). Re-install screw without net strap and add 3 washers provided.

iii) Remove 2 screws holding door shown in (Fig.3). Remove door with net. OEM door and net are not used. Keep fasteners as they will be re-used.

Fig.1



Fig.2



Fig.3



Visit www.defendercab.com / Product Instructions to view this manual online

iv) Remove 2 screws holding door striker shown in (Fig.4). Keep fasteners as they will be re-used.

Fig.4



2. Cab Installation

v) Install passenger side bracket using OEM fasteners removed in step 4 as shown in (fig.5). Repeat for driver side

Fig.5



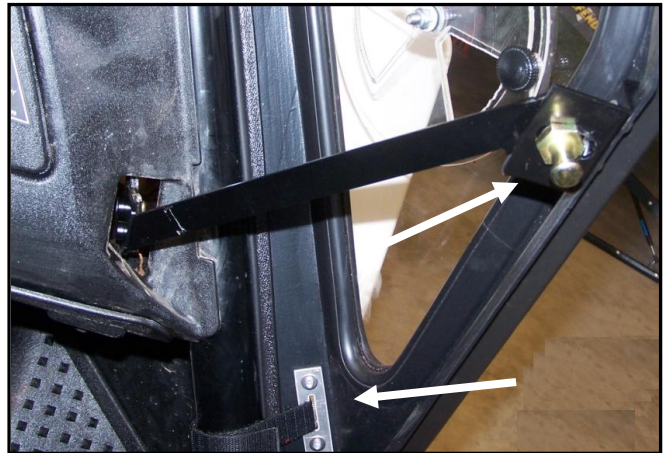
vi) Install side panel assy by attaching to existing hinge bracket. Attach all velcro straps around roll bar (Fig.7). Repeat for opposite side panel assy.

Fig.6



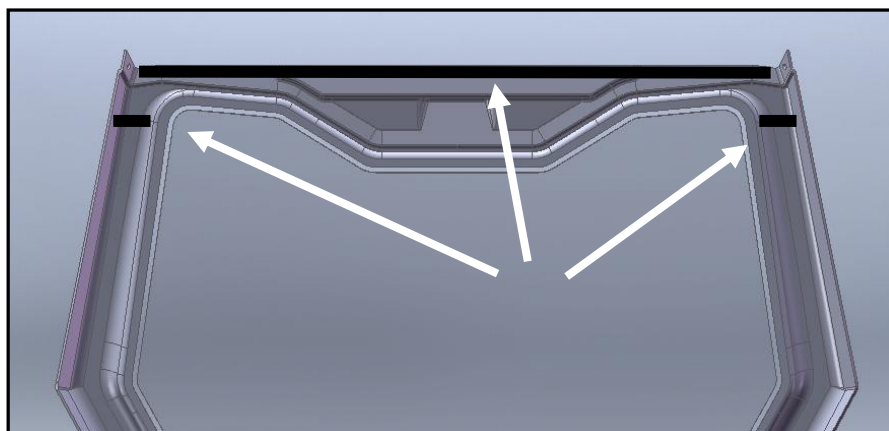
vii) Install striker bolt as shown in (Fig.7). Repeat for opposite side.

Fig.7



viii) Loosely install rear panel, windshield panel and roof panel as shown in (Fig.8). Add stick on foam along inside edges as shown. This will prevent noise vibration.

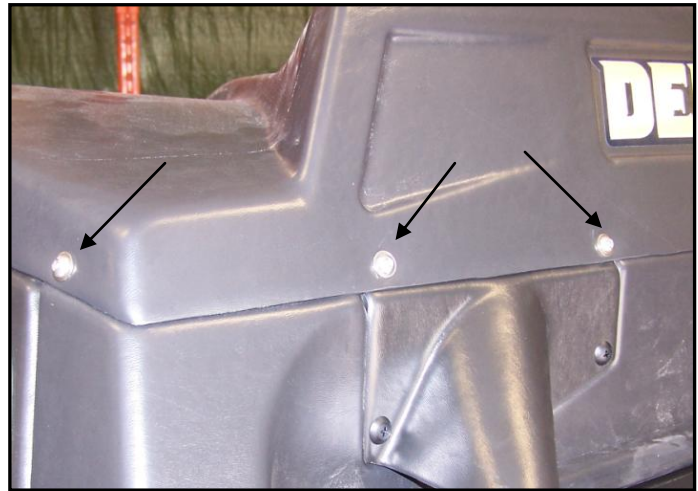
Fig.8



ix) Loosely fit Passenger Roll Bar Flares by sliding under roof panel at location showed in (Fig.9). Repeat for opposite side. Using 1/8" drill bit, drill 8 pilot holes at locations shown in (Fig.9 & 10). Drill 1/4" at same locations. **Using 1/4" drill without pre drilling 1/8" first might result in miss alignment.**

Note: Use piece of wood or scrapping to protect roll bar during drilling operations. When drilling, apply enough pressure to pass through all 3 panels. If required, ask an assistant to carefully apply pressure on opposite side using wooden block or scrapping.

Fig.9



x) Install 1/4" Truss head screws and nuts at location indicated by arrows on (Fig.9) & (Fig.10). Total 8 locations.

Fig.10



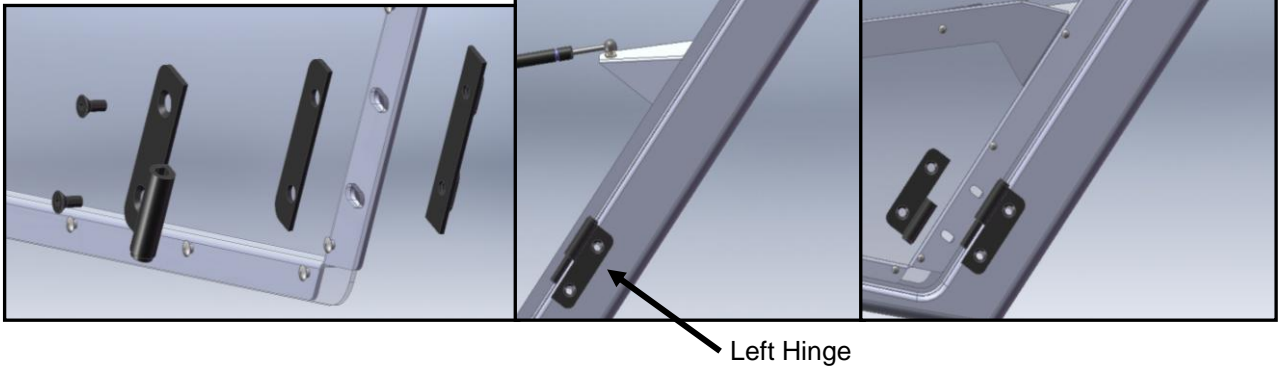
xi) Drill 1/8" pilot holes at all remaining hole locations. Drill 1/4" holes and install push clips at all remaining locations (Fig.11).

Note: Use piece of wood or scrapping to protect roll bar during drilling operations. If required, ask an assistant to carefully apply pressure on opposite side using wooden block or scrapping.

Fig.11



xii) To install doors, first remove lower door hinge, then slide upper door hinge onto side panel upper hinge. Install lower hinge back in place as shown (fig.12). Opposite hinges are used on the same side to make sure doors can't pop off its hinges during a rough ride.



xiii) Install motion damper as shown in (Fig.13).

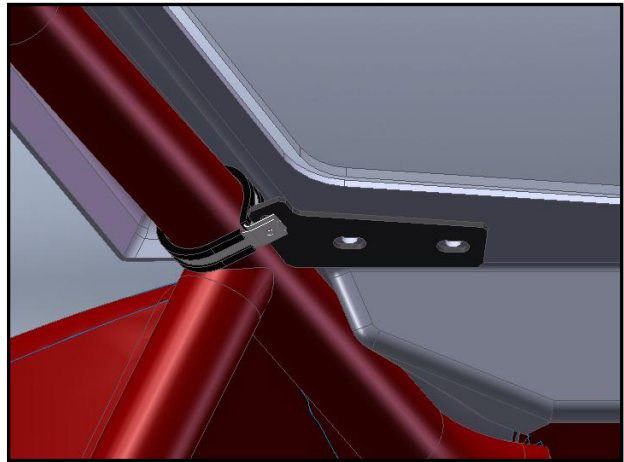


xiv) If required, adjust Striker bolts (Fig. 14) to ensure doors close properly. Door hinges can also be adjusted if required.



xv) Install two rubberized clamps on each side of the front roll bar to fasten down front panel as shown (fig.15).

Fig.15

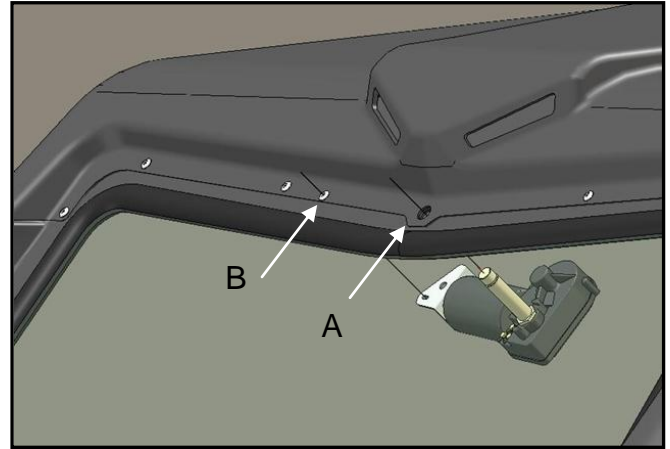
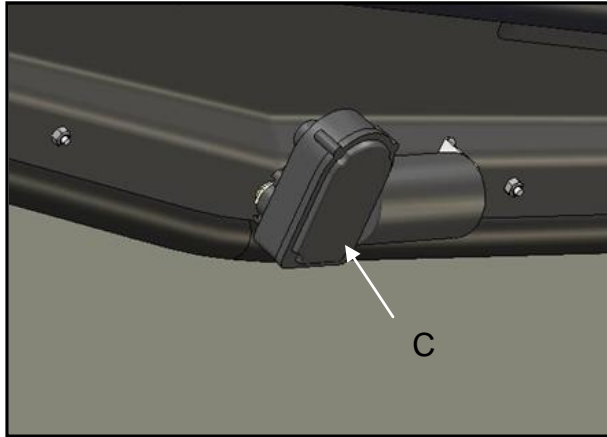


Additional Note(s):

- a) Removal of belts and/or nets is not recommended as this cab enclosure is **not** designed as a roll over protection system. Always wear proper safety gear while riding your vehicle.
- b) To remove doors, simply unhook motion dampers and lift doors off while holding them close to the vehicle (near closed position).
- c) Plastic panels are coated with a UV resistant film, application of any chemical should be tested in an inconspicuous area first as some chemical agents are known to melt certain finishes.
- d) Visit defendercab.com regularly for updates and newly added items to fit your vehicle.
- e) Wash enclosure with soapy water as you would any other vehicle.

Windshield Wiper Option:

If you purchased the optional windshield wiper unit, remove the center screw from the roof/windshield panel interface and enlarge the hole to 5/8" (A). Mount the wiper motor in the orientation shown and add hardware (B).



Adjustments to wiper sweep angle and "home" position can be made by removing cover (C) and following the manufacturer's instructions printed on box. Run wiring along driver A-Pillar and feed wiring trough clutch vent opening. *Note: Motors are normally shipped at maximum sweep angle of 110 deg. Set the arm and blade as shown in picture for maximum efficiency.*



To order replacement parts, contact the Parts Department at:

LB Manufacturing Inc.
247 Arsenault Road, Dieppe,
N.B. Canada E1A 7J5
Ph: (506) 388-9334 Fax (506) 388-3325
Toll Free: 1-877-380-3335
www.defendercab.com
parts@defendercab.com

Manual Revision: 1.0

Date: September 23rd, 2013